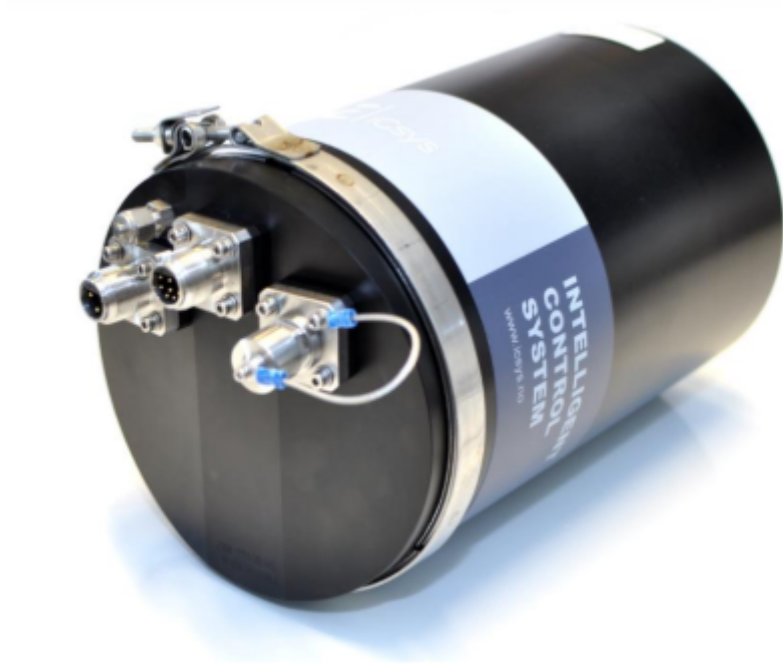


SUBSEA BATTERY CANISTER

SUBSEA BATTERY
CANISTER



Description

The subsea battery canister is a standalone product for power storage and distribution.

The canister is the same size as other standard Ixys tubes, thus making it easy to fit in existing designs.

Easy hook-up and activated with an included switch plug.

A simple 12A charger is included.

Typical Operations

- ▣ ROV Operations
- ▣ Power storage
- ▣ Power distribution

Features

- ▣ Internal BMS with balancing and safety functions
- ▣ Passive cell balancing
- ▣ Undervoltage protection
- ▣ Overvoltage protection
- ▣ Charging overcurrent protection
- ▣ Discharging overcurrent protection

SPECIFICATIONS

SUBSEA BATTERY CANISTER

General Technical Specifications

Type	Subsea Battery Cannister
Part Number	107376
Dimensions L x W x H	207 mm x 207 mm x 330 mm
Weight in air / submerged	~ 16 kg / ~ 9 kg
Discharge temperature range	-20 °C to +60 °C
Charge temperature range	0°C to +45 °C
Storage temperature range (1 month)	-20°C to +60°C
Storage temperature range (3 months)	-20°C to +45°C
Storage temperature range (1 year)	-20°C to +25°C

Electrical

Voltage output nominal	21-29,4 VDC
Charging voltage (CC-CV)	29,4 VDC
Continuous discharge current (max)	30 A
Continuous charge current (max)	15 A
Capacity (@25°C)	63 Ah
Optimal storage voltage	25 – 26 VDC
Activation connector	Glenair G5506-1503
Power connector	Glenair G6606-2008
Battery Cell Type	Panasonic Li-ion NCR18650GA

Technical

Depth Rating	MSW 4000
--------------	----------

