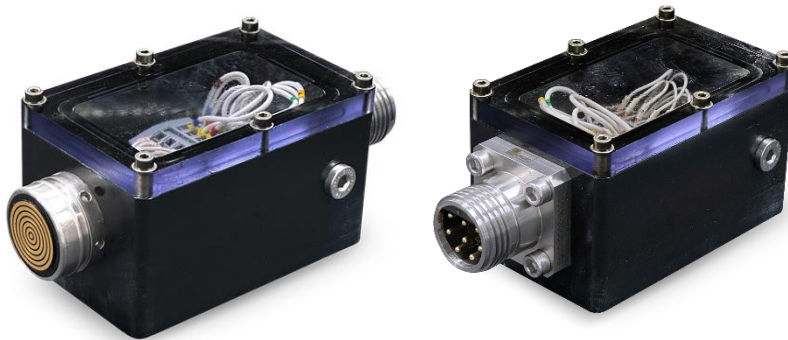


# SEANET JUNCTION BOX

GLENAIR CABLE  
TO SEANET CABLE  
CONVERTER



## Description

The Seanet Junction Box is used to make it simple and easy to use as an interface from Glenair Cables to Seanet Cables.

With a Glenair G5506-2008 male connector in one end and Seanet Connector in the other end.

Designed with the see-through glass to easily check the wiring inside.

## Typical Operations

- Converter from Glenair to Seanet

## Features

- Compact Design
- Compensated through Seanet connector
- Ports for optional external compensation
- Fill and bleed ports
- POM housing
- See through polycarbonate lid
- Terminal block for easier pin reconfiguration

# SPECIFICATIONS

## SEANET JUNCTION BOX

### General Technical Specifications

Type	Junction Box
Part Number	117683
Dimensions L x W x H	170 mm x 75 mm x 75 mm
Weight	750 g

### Hydraulic

Bleed and fill port dimension	1/8" BSP
-------------------------------	----------

### Technical

Glenair connector PN	G5506-2008
Seanet connector PN	101-6087

