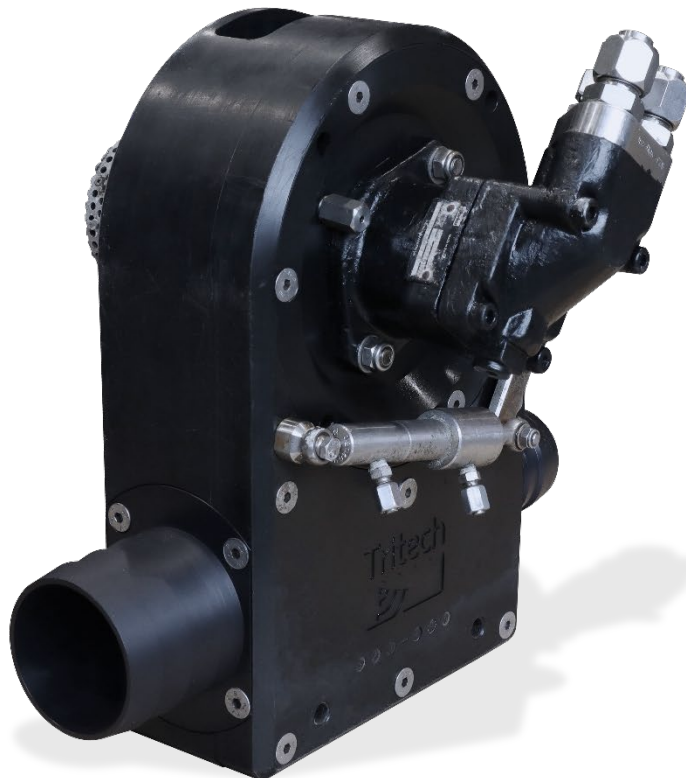


# ROV SUPER ZIP JETTING PUMP

REMOVAL OF DRILL CUTTINGS

WORK CLASS ROV'S

SMALL AND COMPACT DESIGN



## Description

**The Super ZipJet will not block or jam because there are no moving parts on the dredging side of the system. Power is derived from a stream of high velocity fluid creating a low-pressure region behind the suction nozzle. The pump may be rapidly switched from suction to jetting mode.**

The Super ZipJet incorporates many technical advances over the previous generation of ROV suction and jetting systems. These advances are a direct result of customer feedback. Considerable emphasis has been placed on increasing efficiency in both the suction and jetting modes. The Super ZipJet incorporates several design features, which improve its reliability and substantially reduce its maintenance costs.

## Applications

- Work-class ROVs
- Break up of seabed muds and sands
- Removal of drill cuttings

## Features

- ROV Mounting system
- Modular pump core
- Multiple mounting configurations
- Robust and compact design
- Will not block or jam
- Easy in-field maintenance

■ The specification details are illustrative for marketing purposes only. Actual equipment may be different as a result of product improvement or other reasons. Specific interface and performance information should be reconfirmed at time of order placement.

Envirent AS, Robotvegen 16, 4340 Bryne, +47 477 77 500 post@envirent.no

# SPECIFICATIONS

## ROV SUPER ZIP JETTING PUMP

### General Technical Specifications

Type Super Zip ROV Dredge Pump  
 Part number SUPER-ZIP

### Weight and Materials

Materials Nylacast, UHMWPE  
 Weight in air 25kg (55lb)  
 Weight in water 11Kg (24lb)

### Hydraulic Motor Input

Pressure 150 to 220 Bar (2200 to 3200 psi)  
 Flow 40 to 60 l/min (11 to 16 USgpm)

### Actuator

Minimum pressure 110 Bar (1595 psi)  
 Maximum pressure 240 Bar (3480 psi)

### Pump Performance / Output

Jetting performance 1000 l/min @ 2 Bar (270 USgpm)  
 Suction flow 500-1000 l/min (132 – 270 USgpm)  
 Solids removal rate 5-10 tonnes per hour (184 – 368 lb per minute)

### Hydraulic Connections

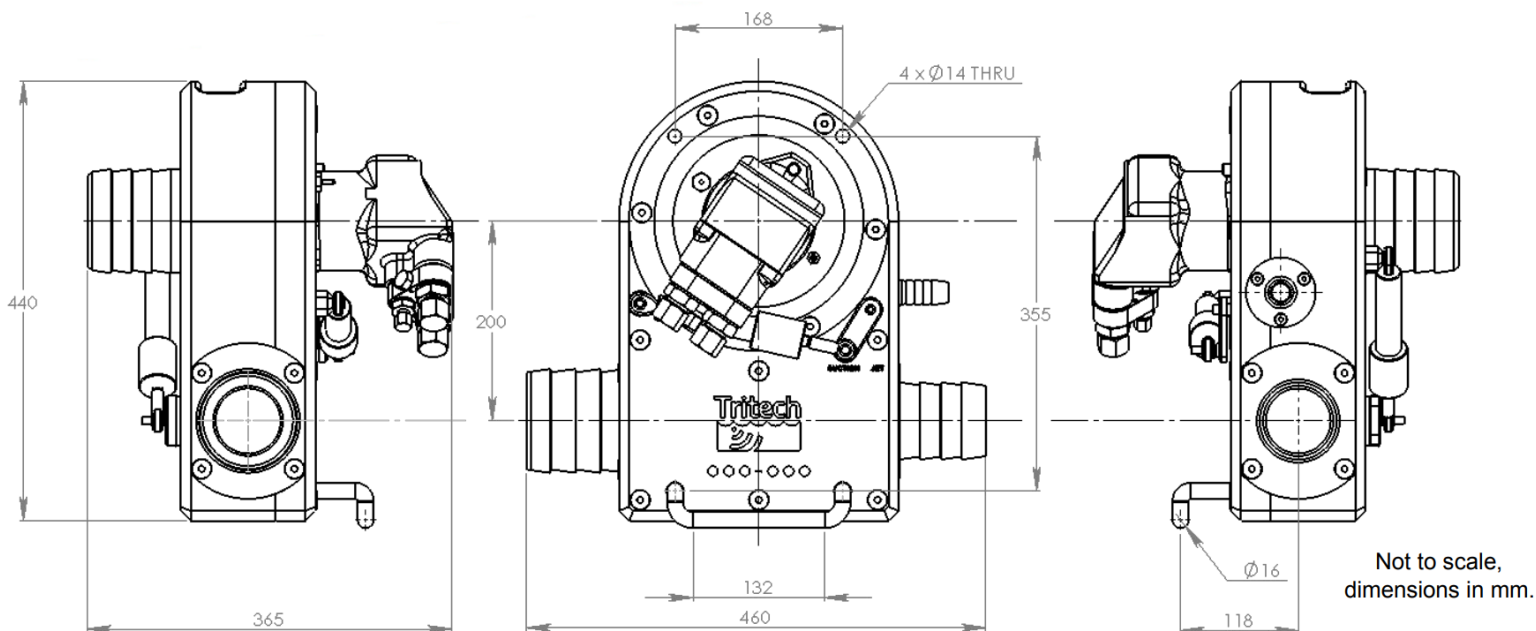
Motor A & B No. 12 JIC male  
 Motor case drain No. 06 JIC male  
 Actuator connection No. 04 JIC male

### Check Valve

Normal Tritech Volvo Protector Assembly  
 Alternative Integrated Hydraulics FPR-1/22-0.5 (cracking pressure 0.5 bar)

### Hose Dimensions (internal diameter)

Jetting 25.4mm ID (1in)  
 Discharge 100mm ID (4in)  
 Suction 75mm ID (3in)  
 Clean Water Inlet 100mm ID (4in)



■ The specification details are illustrative for marketing purposes only. Actual equipment may be different as a result of product improvement or other reasons. Specific interface and performance information should be reconfirmed at time of order placement.  
 Envirent AS, Robotvegen 16, 4340 Bryne, +47 477 77 500 post@envirent.no