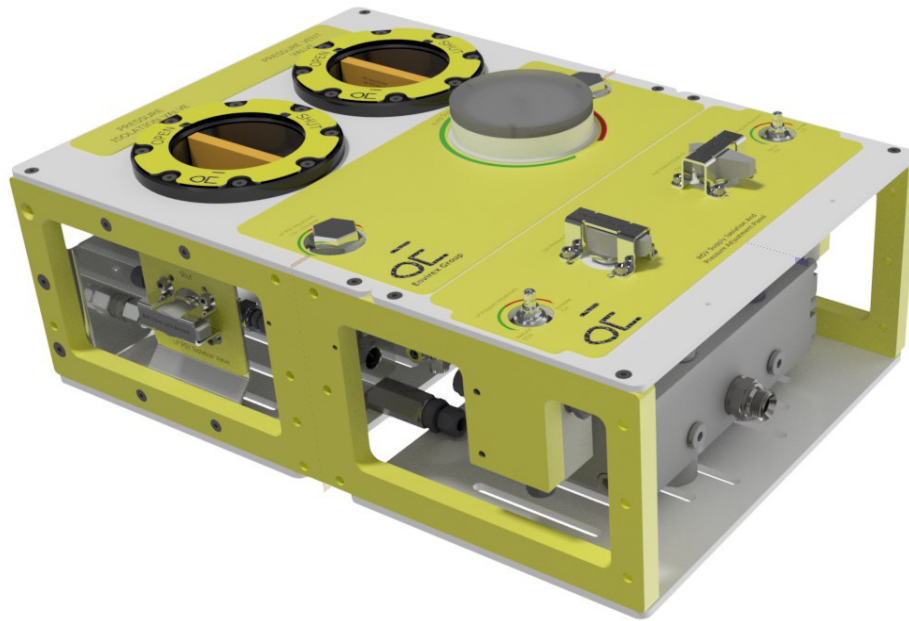


PRESSURE TEST UNIT 520 BAR

ROV INTERVENTION
ISOLATED HYDRAULIC
PUMP SYSTEM



Description

Pressure Test Unit (PTU) is designed to be a compact and highly effective tool for subsea pressure testing from ROV.

The PTU comes with integrated dual acting booster pump, Flow Control Valve and two Pressure Reducing Relieving Valves on inlet supply for tuning- and maximum pump pressure control. PTU can be setup for low pressure test through separate LP or high pressure tests though HP circuits. Each system have separate Safety Pressure Valves on pressure outlet line. Digital sensor and logging software gives live pressure feedback and recording options for pressure test certificates.

Features

- Dual Acting booster pump 520 Bar
- Vent to sea/tank line
- LP and HP circuit
- Digital pressure sensor
- Print of pressure test certification
- Coms. RS 232
- Compact design and low weight

SPECIFICATIONS

PRESSURE TEST UNIT 520 BAR

General Technical Specifications

Type	Pressure Test Unit 520 Bar
Part Number	09220
Dimensions	mm 650 x 247 x 450
Weight (in air)	kg ~85

Electrical

Supply Voltage	VDC 24VDC
----------------	-----------

Communication

RS 232, RS 485 and Ethernet	8PIN Glen Air G5506-1508-0004 Pigtail 1 meter
-----------------------------	---

Hydraulic

Max. Input Pressure	Bar 207
Max. Output Pressure	Bar 520
Max. Input Flow	L/min 80
Max. Output Flow	L/min 30

Connection ROV pressure	JIC #8
Connection ROV return	JIC #8
Connection output pressure	JIC #6

General Features

Depth rating	MSW 3000
--------------	----------

