

ELECTRIC TORQUE TOOL

ROV INTERVENTION
CLASS 1-4 (API 17D)
HIGH PRECISION



Description

The Electric Torque Tool is a module based, compact, flexible and robust precision tool for operation and use in all subsea and ROV applications. Delivered with the new generation software control system (iCsys Suite) for maximum utilization.

The system combines all known advantages from a hydraulic torque tool system with the technology and advantages available from a modern servo based electrical controlled drive system.

Interface sockets are replaceable on both deck and subsea (optional) to interface ISO Class 1-4 interfaces. The different sockets will automatically interface the gear system to utilise the optimal gear ration and power/speed capacity. The control system automatically detects socket and gear ratio and will automatically switch between low torque and high torque mode.

Features Torque Tool

- Compact and low weight tool
- Min torque output 20 Nm
- Max torque output 2711 Nm
- Subsea socket changeout jig (optional)
- Low voltage 5A 110VAC circuit
- iCsys Suite Control System
- Low torque at 350 Nm and 30 RPM
- High torque at 2711 Nm and 6 RPM
- Mechanical latching wings
- Mechanical turn indicator (backup)

Features Control System

- iCsys Suite modular Control System™
- Automatically as found / as left still pictures
- Supports IP camera connection
- Torque and Turns recording chart
- Gearbox Class 5/6/7 indicator in GUI
- *Cloud based Valve Management System™

*In development

■ The specification details are illustrative for marketing purposes only. Actual equipment may be different as a result of product improvement or other reasons. Specific interface and performance information should be reconfirmed at time of order placement.

Envirent AS, Hattelandsveien 92, 4353 Klepp Stasjon, +47 477 77 500 post@envirent.no

SPECIFICATIONS

ELECTRIC TORQUE TOOL

General Technical Specifications

Type	Electric Torque Tool
Part Number	ETT
Dimensions Pod Canister	mm Ø185 L=325
Dimensions ETT Tool	mm Ø190 L=367
ETT Pod Canister	kg ~13 / ~5
ETT Tool Weight (in air / submerged)	kg ~34 / ~26

Specifications

Max. output Torque	Nm 2711
Max. speed	RPM 30

Electrical interface

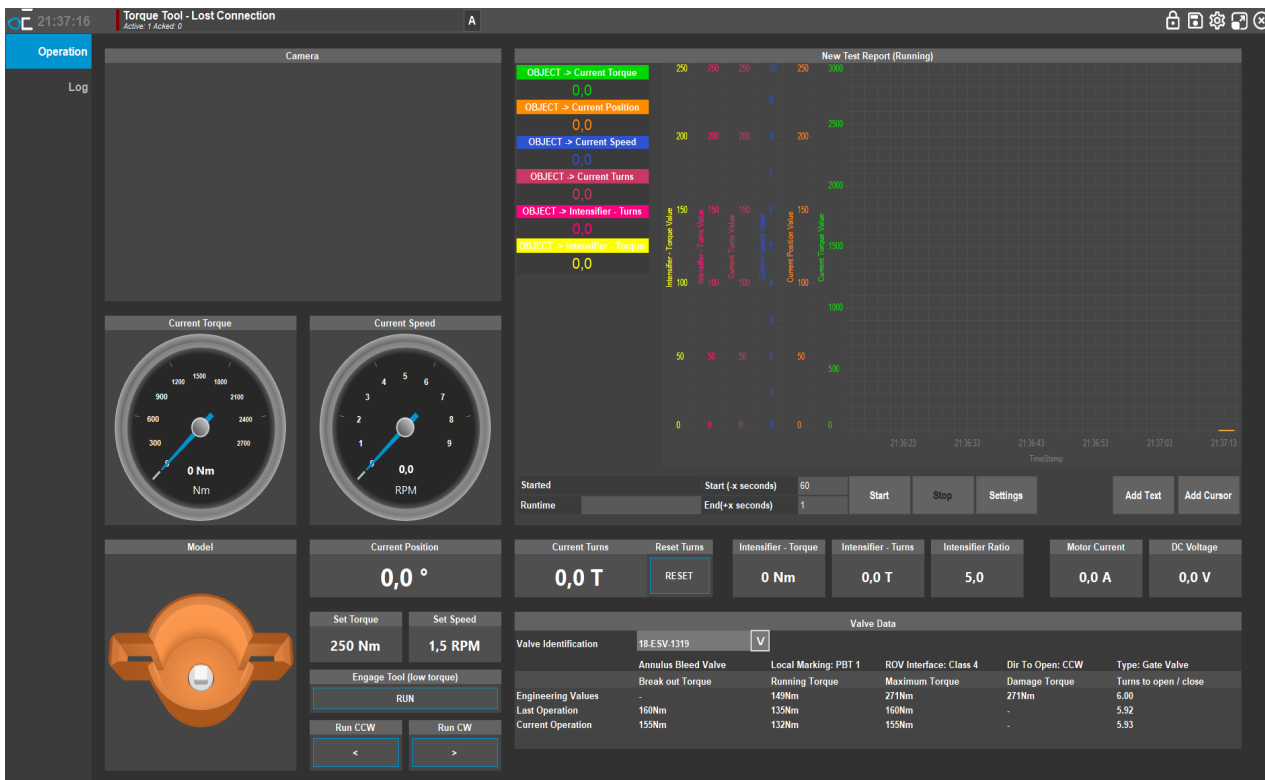
Power	kW 2 (to achieve 2700 Nm @ 6 RPM 2 kW is required)
Input	110-230 VAC 50/60Hz or 160-320 VDC +10/-15%
Communication	Standard RS 232 (RS 485 and Ethernet upon request)

Interface description

- Burton connector 5507 2008 8 pin connector
- 1 110-230 VAC / 160-320 VDC
 - 2 110-230 VAC / 0 VDC
 - 3 Chassis
 - 4 N.C.
 - 5 RX RS 232
 - 6 TX RS 232
 - 7 N.C.
 - 8 Com./GND

General Features

Depth rating	MSW 3000
--------------	----------



■ The specification details are illustrative for marketing purposes only. Actual equipment may be different as a result of product improvement or other reasons. Specific interface and performance information should be reconfirmed at time of order placement.
 Envirent AS, Hattelandsveien 92, 4355 Klepp Stasjon, +47 477 77 500 post@envirent.no