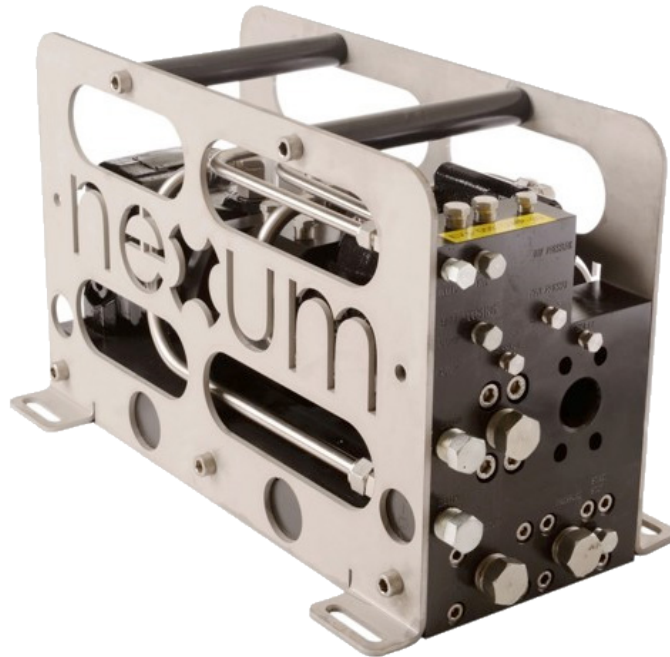


# DIRTY WORK PACK

210 BAR PUMP  
60 LPM FLOW POWERPACK  
EFFICIENCY RATED TO 66%



## Description

**210 Bar Dirty work pack is compact, simple to incorporate and service friendly. Contains well proven components integrated and all hydraulic connections is located in one end.**

The motor circuit on the DWP has a built in start/stop valve for remote start/stop, and has a flow regulator valve for speed control. The pump circuit has a built in pressure relief valve. The pump can be internally pressure compensated, remote pressure regulated or connected to a load sensing valve system. Soft-start function integrated to ensure fully utilization at all times.

## Features

- 210 Bar pump supply
- 60 L/min pump flow
- Integrated flow control valve
- Integrated start/stop valve
- Integrated soft-start function
- Rated to 3000 MSW
- Bulkhead connection
- Efficiency is rated to 66%

# SPECIFICATIONS

## ISOLATED HYDRAULIC POWER UNIT

### General Technical Specifications

Type	Isolated Hydraulic Power Unit
Part Number	DWP-REX
Dimensions	mm 590 x 350 x 250
Weight (in air / submerged)	Kg ~65 / ~55

### Hydraulic

Max. Input Pressure	Bar 210
Max. Output Pressure	Bar 210
Max. Input Flow	L/min 90
Max. Output Flow @ 210 Bar	L/min 60

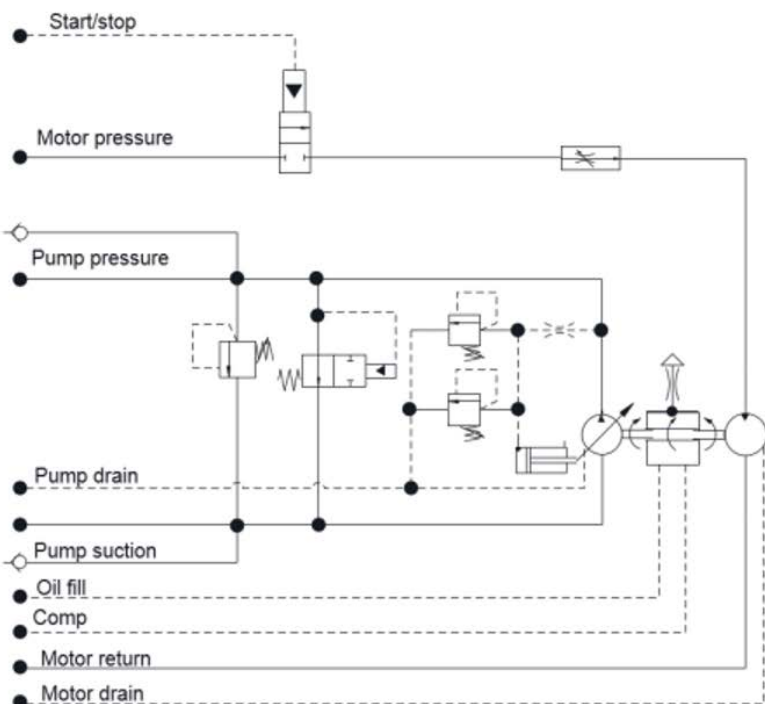
Fluid Compatibility Pump= Mineral oil / Waterbased  
Motor= Mineral Oil

Connection ROV pressure	JIC	08
Connection ROV return	JIC	12
Connection ROV drain	JIC	06
Connection ROV start/stop	JIC	04
Connection DWP supply	JIC	08
Connection DWP Case Drain Connection	JIC	06
DWP Suction	BSP	1-1/4"
Connection DWP Ext. Regulator	NPT	1/8"

Connection DWP Bellhousing Fill Swagelock QC6 Female

### General Features

Depth rating MSW 3000



■ The specification details are illustrative for marketing purposes only. Actual equipment may be different as a result of product improvement or other reasons. Specific interface and performance information should be reconfirmed at time of order placement.  
Envirent AS, Robotvegen 16, 4340 Bryne, +47 477 77 500 post@envirent.no